

# Instructions to Download, Install and Activate

## Stitch Era Universal version 17, Express & Standard Editions

This document contains the sequence of steps to correctly download, install and activate **Stitch Era Universal**. You can only download this software from an authorized dealer's website. Do not download this software from any other non-authorized source.

*Note: In case you experiment a problem on any step, take note of the step number. This step number will help us to identify the problem. First, try to search for the answer in this document. If you cannot find it, then check the articles on the Troubleshooting section of the pages where you are downloading the software.*

### DOWNLOAD

#### Step 1: Start Download

On the Stitch Era Universal Subscription Page:

Read articles:

[SYSTEM REQUIREMENTS](#)  
[SOFTWARE LICENSE OF USE](#)

Then press on:

[Ask A Software Demo](#)

**stitchera UNIVERSAL**  
Full-Featured Embroidery Design Software as Subscription

**BUY 1 GET 2**  
Double it today!  
Buy 1 subscription of any edition of Stitch Era Universal and 2 software licenses of the same product during the same subscription time. Limited time promotion

Software as subscription offers similar features and performance compared to some advanced and expensive standard software products at a very low monthly cost.

- 1 GET & PLAY**  
The software configuration of the demonstration is Stitch Era Universal Express Edition (lowest level)
  1. Ask a software to try
  2. Install your demo
  3. Use it for a weekUse the software as a trial for a week. If you are satisfied with the features, performance, quality, general result and compatibility with your machines, then go to the next step.  
[Ask A Software Demo](#)
- 2 SUBSCRIBE**
  1. Read the features of each software edition and compare them
  2. Purchase a subscription: select software edition and subscription time. The serial number of your software demo will be required  
[Purchase a Subscription](#)
- 3 ENJOY**  
Approximately 30 minutes after you purchase a subscription plan, your trial software will get the features of the subscription (software configuration and subscription time).  
You can use the software until the subscription time ends. If you want to continue using the software after the subscription expires, you can renew it.  
[Renew Subscription](#)

[More Information](#)  
Software Overview  
Features & Levels

[Compatibility with Machines](#)  
Software License of Use

[System Requirements](#)  
Software Installation Guide

[Frequently Asked Questions](#)  
Technical Support

#### Step 2: Complete Your Data

Complete all the fields in the Try a Demo form:

**stitchera UNIVERSAL**  
Full-Featured Embroidery Design Software as Subscription

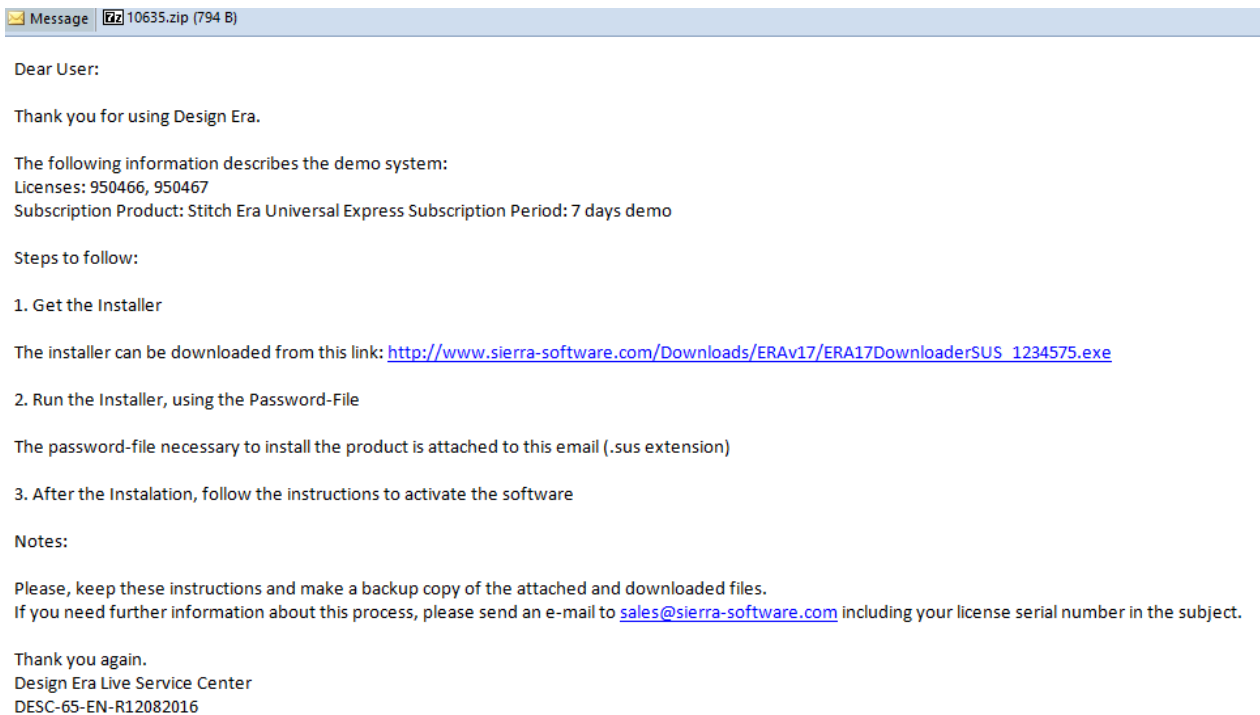
### Try a Demo

Fill the fields below to get a demo version

Name:	<input type="text"/>	Last Name:	<input type="text"/>
Company:	<input type="text"/>	E-mail:	<input type="text"/>
City:	<input type="text"/>	Country:	<input type="text" value="Select Country"/>

Press on the Create a Demo button.

You will receive an email with instructions, the link to download and install the program and the passwords-file. Save the attached file (.zip), it contains the passwords-file that you will need to install the product, to a safe place in your disk. Follow the steps from the email



### Step 3: Downloader Program

When you click on the downloader link the download process has started. Your internet browser will show a window for confirmation.

Press on SAVE, and then choose the destination folder.

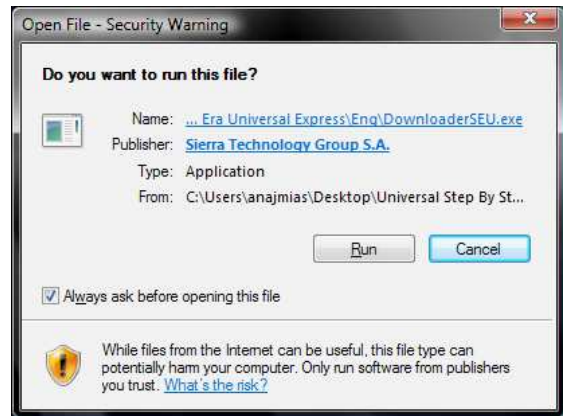
The downloader program "ERA17DownloaderSUS" will be saved in that folder.

#### Step 4: Run the Downloader Program

After download ends, go to the destination folder where you have saved the file.

Run (double click) on the file

ERA17DownloaderSUS

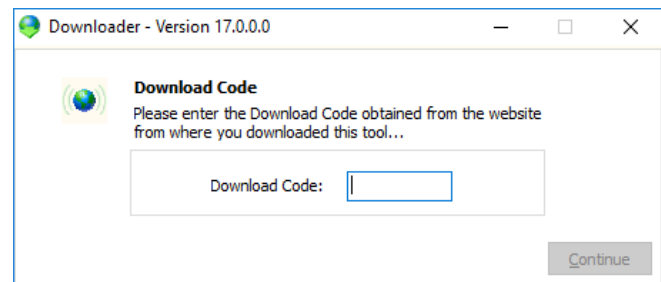


#### Step 5: Check your Download Code

The downloader program will show the following window.

The DOWNLOAD CODE will be completed automatically when you run it.

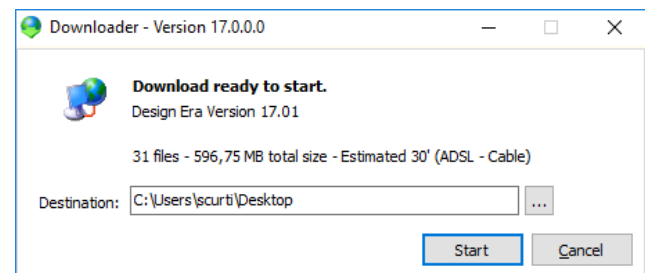
Press on CONTINUE.



#### Step 6: Temporary Folder for the Installation Program

Select a folder for the Installation Program of **Stitch Era Universal software**.

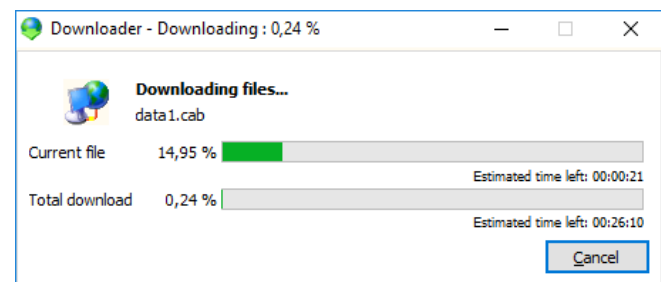
Press on START.



#### Step 7: Downloading

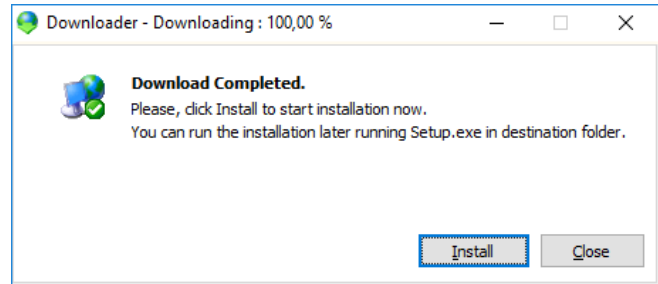
Download will begin.

Please wait until it has finished.



## Step 8: Start Software Installation

Once the download has finished, click on **INSTALL** to run the Installation Assistant.



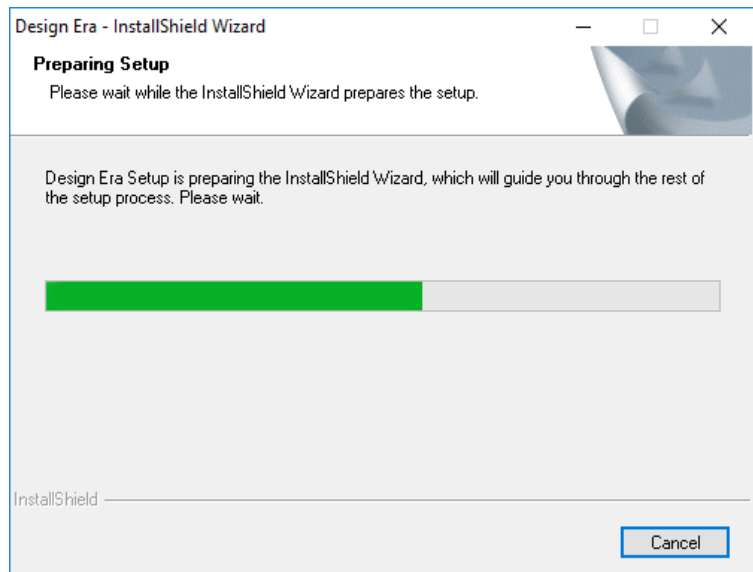
## INSTALL

### Step 1: Preparing for Installation

The installation wizard will check your system before installing the software.

#### Attention!

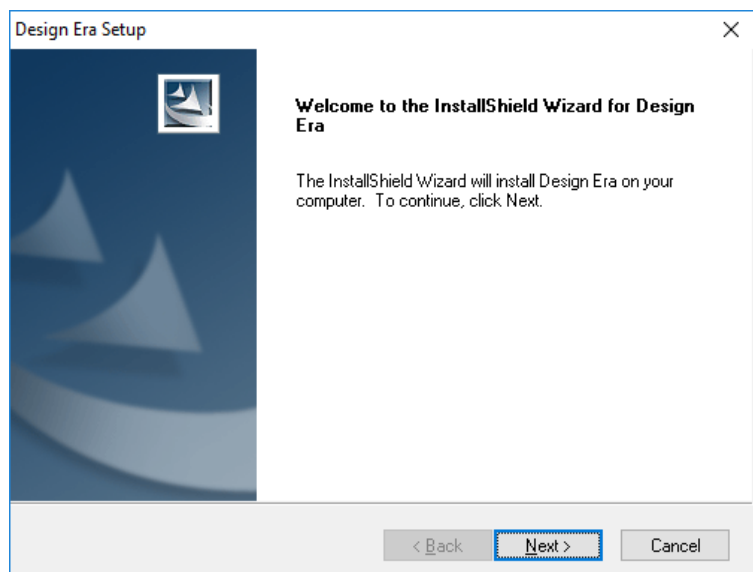
If the installation wizard shows a compatibility warning window (conflict with other software from the same developer), read the article "compatibility message warnings".



### Step 2: Installing the Software

Once the installation wizard is ready, a welcome window will open.

Click on **NEXT**.

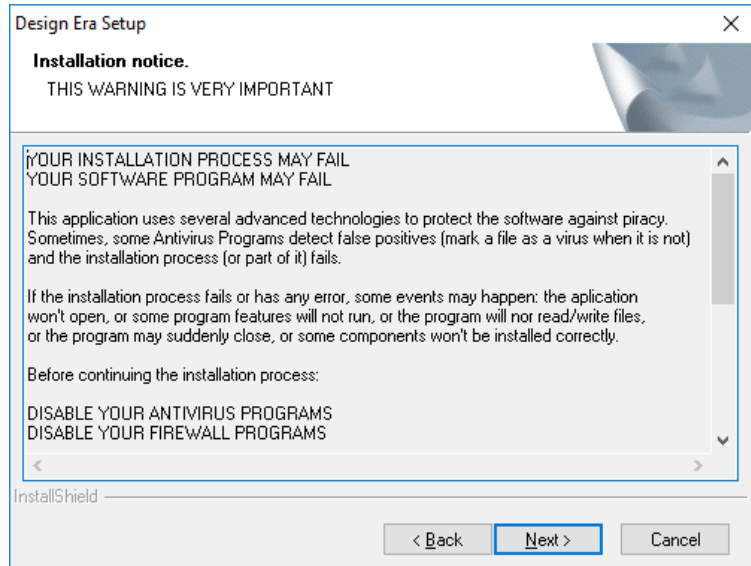


### Step 3: Installation Notes

Please read the Installation notes.

Disable antivirus and firewall before continuing with the installation.

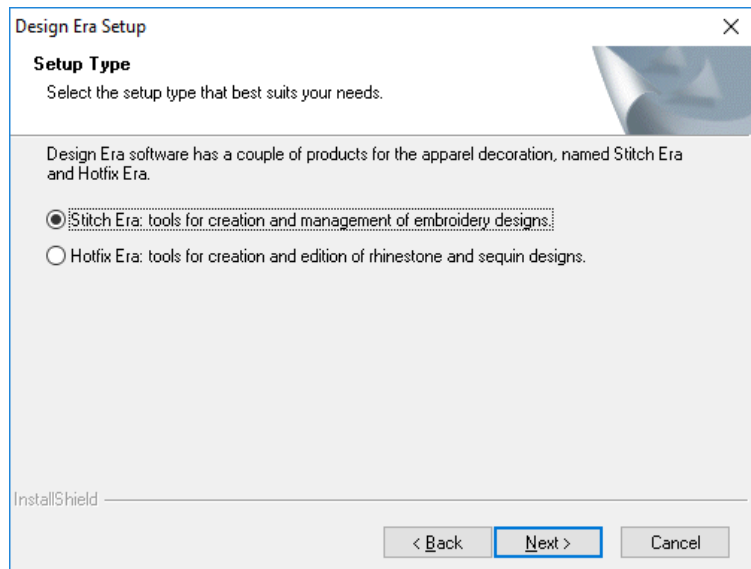
Click on NEXT.



### Step 4: Select Stitch Era

Please select the option Stitch Era in the window to continue with the installation.

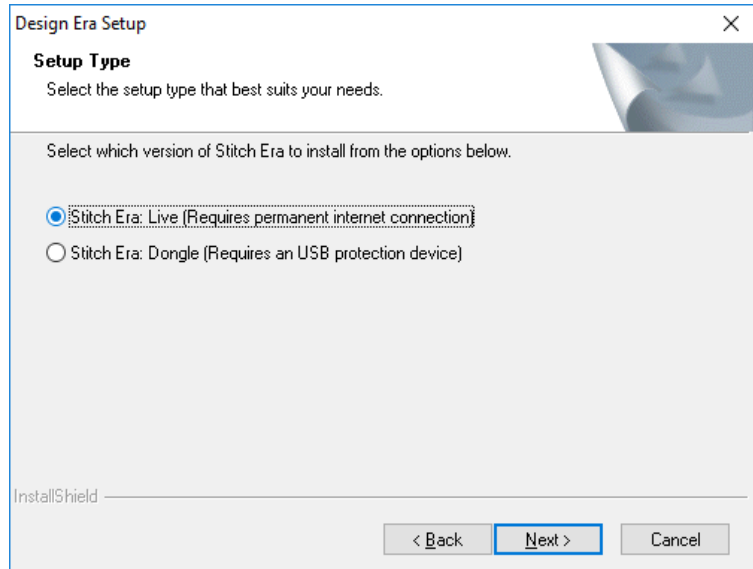
Click on NEXT.



### Step 5: Select Stitch Era Live

Please select the option Stitch Era Live in the window and continue with the installation.

Click on NEXT.



### Step 6: Select the installation password file

Attached in the instructions email you have the passwords files that must be selected here to continue with the installation process.

If you have not saved it previously when you received the email, you can do it now.

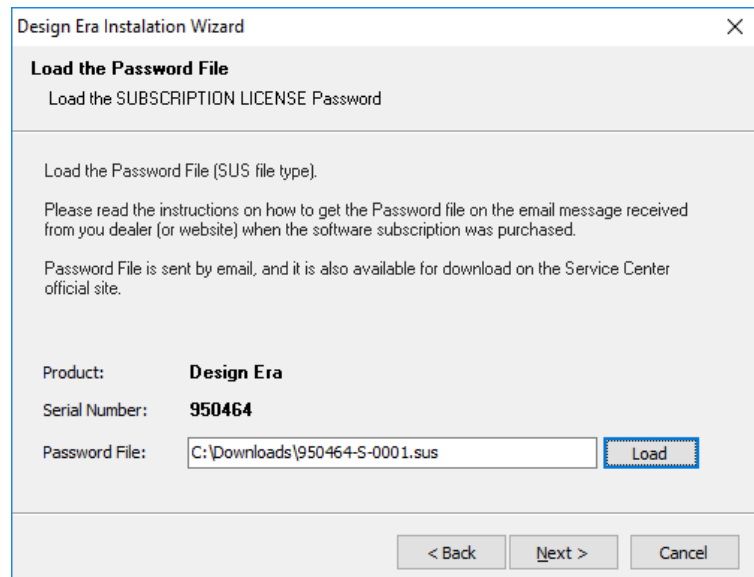
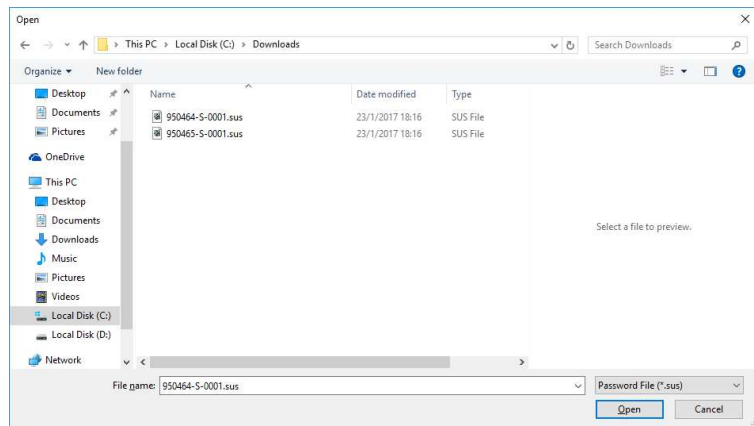
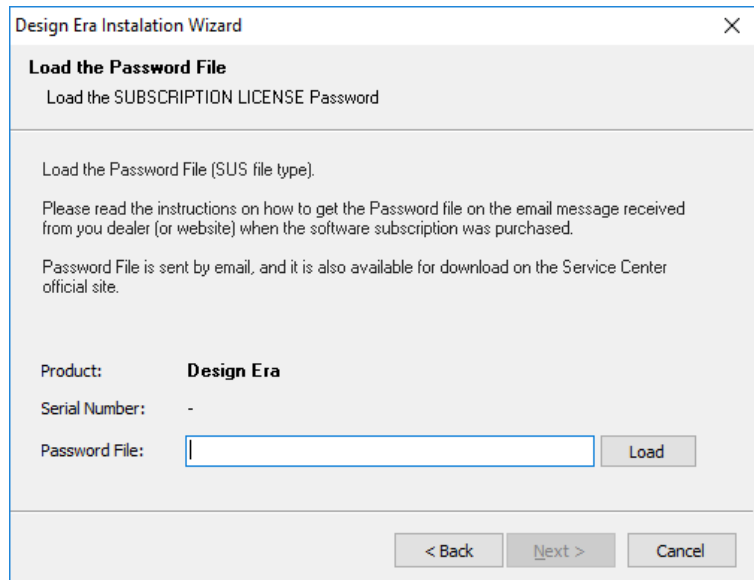
Open the zip file and you will find two licenses, extract them.

You can use them in two installations at the same time

Click the Load button and find them in your disk and select one of them.

Check the sequence in the following windows.

Click on NEXT.



## Step 7: Folder for the Software

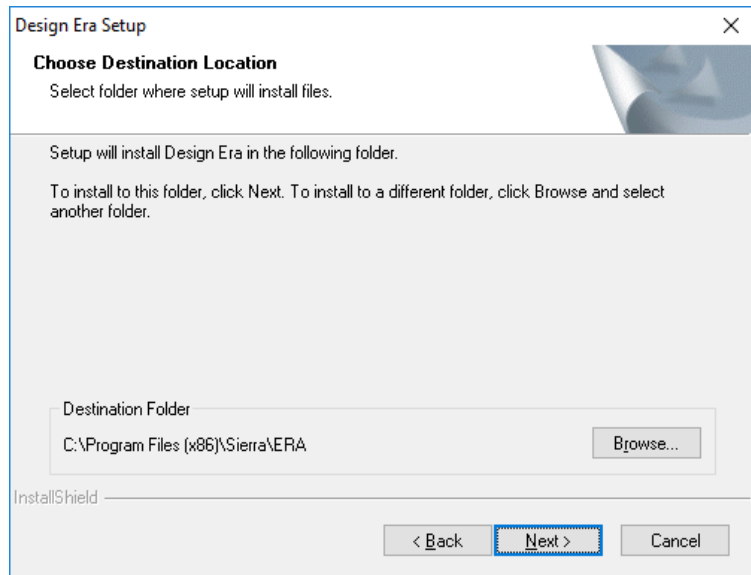
Select the destination of the **Stitch Era Universal** files.

By default, the destination folder is *C:\Program Files (x86)\Sierra\ERA*.

If you want to change it, click on **Browse**.

We recommend to use the default folder.

Afterwards, click on **NEXT**.

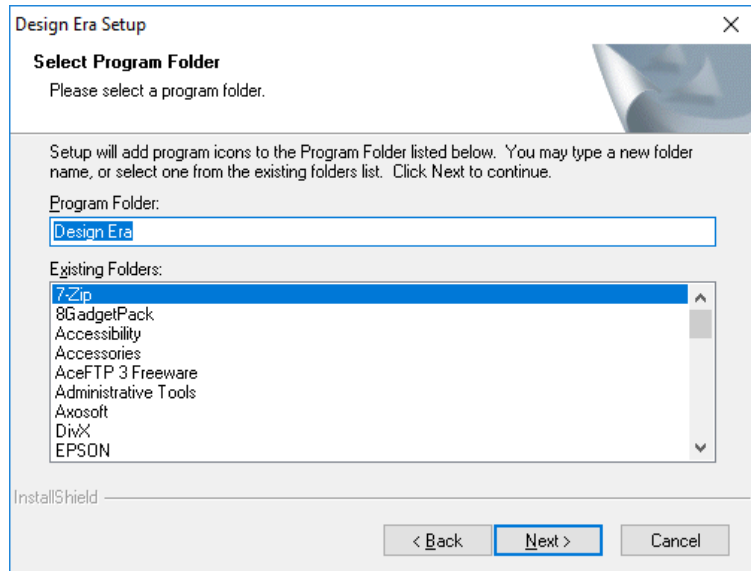


## Step 8: Name of the Software Group

On the following window, you can modify the name of the Program Folder.

We recommend using the default name, "Design Era".

Afterwards, click on **NEXT**.

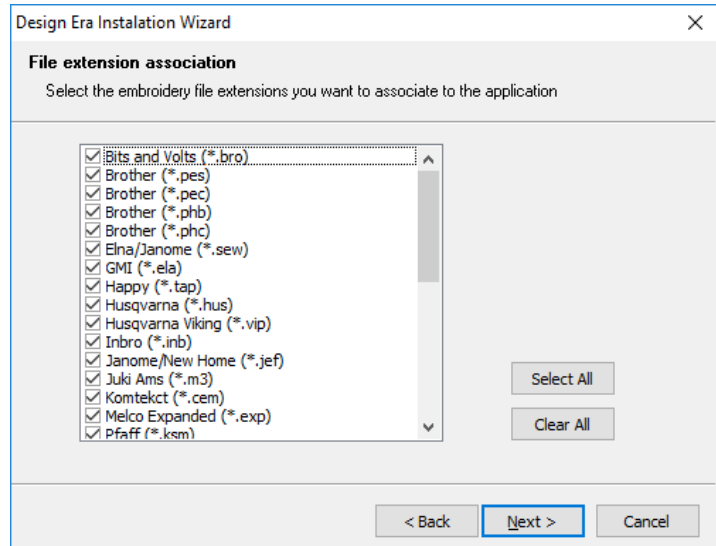


## Step 9: File Extensions associated



Select the embroidery file extensions you want to associate with this application.

Once finished, click on NEXT.



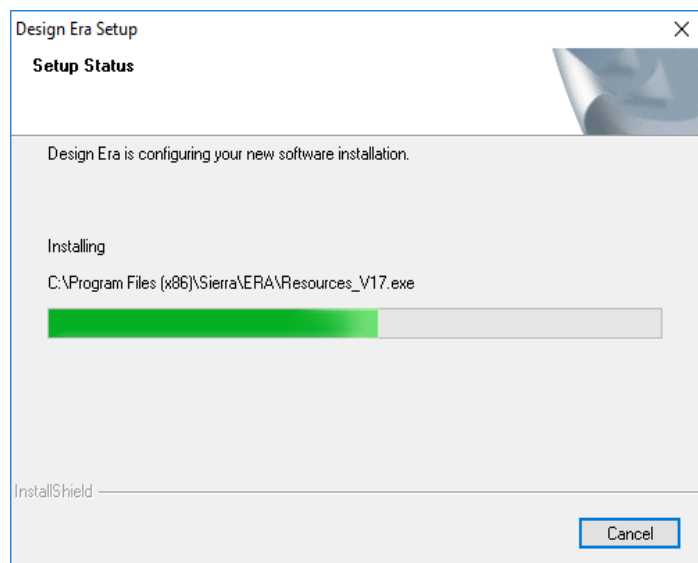
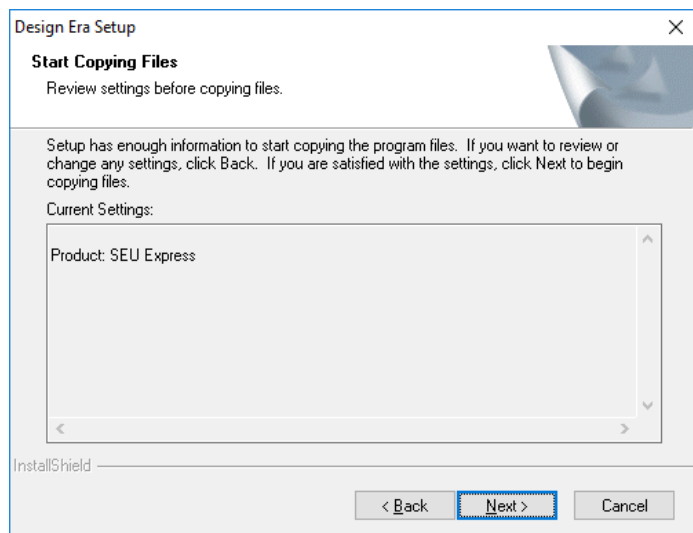
### Step 10: Confirmation before installation

Before starting the installation a last confirmation page.

Then the installation will start.

Click on NEXT.

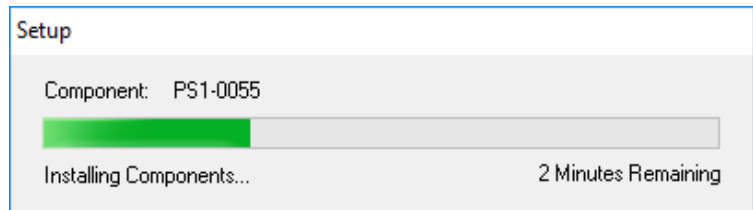
Please wait until the progress bar has completed and the installation has finished.



### Step 11: Registering Components

As part of the installation, **Stitch Era** will register components.

Wait until it has finished.

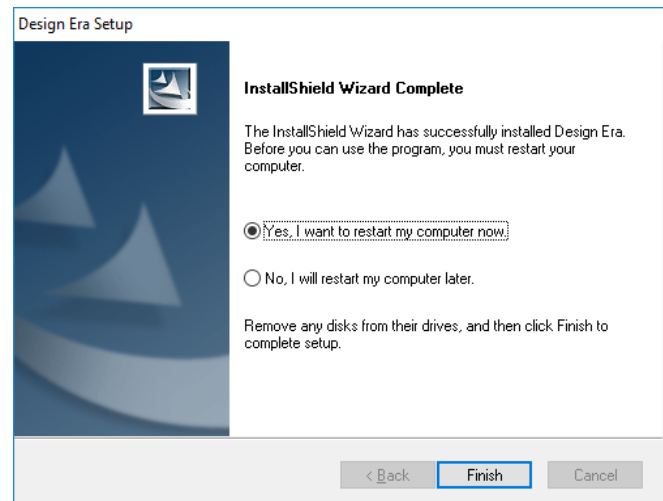


### Step 12: Restart Computer

After completing the installation, the wizard will ask you to reboot the computer.

Select YES.

Then, click on FINISH.



After rebooting, the installation will complete the components registration.



# ACTIVATE

## Step 1: Run the Software (first time)

Run the program from Start\Programs\Design Era\Design or from the Shortcut on the desktop *Design Era*.

You will see the welcome window of **Stitch Era Universal**.

Read the License Agreement

Click on YES to accept the license terms and start the program.



## Step 2: Product Registration 1

The activation wizard will open the Product Registration Form.

Please complete all the fields.

Make sure to write your email address correctly.

Then, click on NEXT.

Activation Wizard

**Product Registration**

Please, complete all the fields. Be sure to type the e-mail address correctly and to have access to that account.

First Name [ ] Last Name [ ]

Company [ ]

Address [ ]

City [ ]

Country USA [v] Zip Code [ ]

State Alabama [v] Telephone [ ]

Fax [ ]

e-mail test@gosierra.com

Computer SEBASTIAN Any time the system needs to refer to this computer it will display the name typed here.  
[Privacy Policies](#)

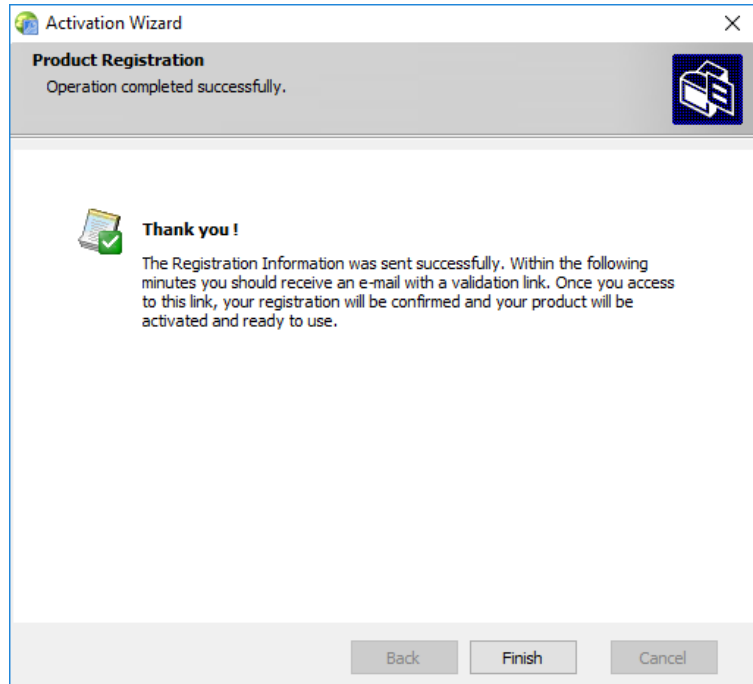
Back Next Cancel

### Step 3: Activation is Done!

If the information was sent correctly, you will get a "Thank you" window.

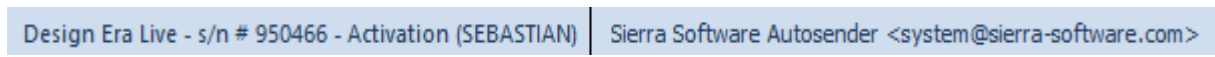
The registration server will send you an email with the confirmation link.

Click on *Finish* to complete the registration.



### Step 4: Check your email box

Go to the Inbox of your registered email. Verify that you have received and email from **Design Era Live**. (If you cannot find it in your Inbox, try your SPAM folder).



The email received will contain a confirmation link.

Click on the link or copy it in your Internet Browser

Dear User:

Thank you for installing Design Era Live!

Now is time to activate your system.

Computer Name: SEBASTIAN  
Serial Number: 950466

Steps to follow to activate your system:

To validate your registration and activate the product installation in the computer SEBASTIAN, please click the link below (or copy and paste it within the address bar of your web browser):

["http://www.sierra-software.com/Act/activate.aspx?ID=RYSVDFJ-1"](http://www.sierra-software.com/Act/activate.aspx?ID=RYSVDFJ-1)

Important: This confirmation link will be valid until 1/31/2017.

If you have not yet activate the software after that date, you must send the registration again: Run the software and follow the Activation Wizard. We will send you a new link to activate the software.

We sincerely hope you enjoy Design Era Live.

Thank you again.  
Design Era Live Service Center  
DESC-53-EN-R04102011

## Step 5: Activation is Confirmed!

As soon as you click on the registration link, a confirmation window will appear on your browser. It will show you that the Stitch Era Universal registration was successful and that the product is activated.

Afterwards, close the browser window.



## RUN THE SOFTWARE

### Step 1: Execute the Software

Run the program from the direct access Design Era on your desktop.

Click on YES to continue.



### Step 2: Start Working

The **Stitch Era Universal** start window will appear. Now start having fun!

