

design era products

stitch  
era

hotfix  
era

version 17

Installation  
Activation  
Important notes  
License agreement

Design Era 17 Installation Guide - Rev 17.00  
First Edition – Printed in Buenos Aires, July 2016  
© 2016 Sierra Technology Group S.A.

## Before Starting

To allow Design ERA to work properly in your equipment, it must meet a series of minimum characteristics. To get a better performance, we recommend that you consider the Suggested Configuration column, trying that your computer meets or exceeds the specified configuration. Design ERA has been developed to work on Microsoft® Windows® 10, Microsoft® Windows® 8, Microsoft® Windows® 7 and Microsoft® Windows® Vista operating systems; therefore, it is essential that any of them be installed and running properly.

---

**Note:** *Should you have any doubt about the operating system, software or hardware necessary for the proper performance of Design ERA, refer to your technical support people or supplier of IT products.*

---

## System requirements

Device	Minimum config. requirements	Suggested configuration
Processor	Core Duo technology (Intel 7300 Series)	I5 Processor - 3.2 GHz
Memory	2 Gb	4 Gb
Video	1024 x 768 pixels True color (32 bits) with OpenGL acceleration	1440 x 900 pixels True color (32 bits) or better with OpenGL acceleration.
Monitor	17" monitor	19" Monitor
Free disk space	2 Gbyte	20 Gbytes
DVD unit	DVD Reader	DVD Reader/writer
Floppy	3.5" HD non USB (required for old embroidery machines)	3.5" HD non USB (required for old embroidery machines)
Ports	1 x USB port (required for USB dongle) 1 x USB port (for mass storage device) 1 x RS-232 port (for/if direct connection)	1 x USB port (required for USB dongle) 1 x USB port (for mass storage device) 1 x RS-232 (for/if direct connection)

---

**Note:** *Design ERA uses a graphical engine that performs better if the video card has OpenGL acceleration. Most of the manufacturers of video cards provide this feature. At the end of this guide, you will find a list with the video hardware tested with Design ERA.*

---

## Internet connection

- **Live Mode:** If you have the **Live Mode** version of the product, the installation, the activation and the use of the software requires a permanent broadband Internet connection. The software must be connected permanently to internet in order to work properly, otherwise it will not function at all.

- **Dongle Mode:** If you have the traditional **Dongle Mode** version of the product with the dongle or protection device, does not require a permanent Internet connection, but keep in mind the following notes:

In order to activate the application once installed in the equipment, you will need an Internet connection in your computer. The Internet connection generally requires a contract with a local ISP (Internet Service Provider).

---

***Important:** Through an Internet connection, the application checks the availability of newer versions of the program and, upon confirmation, installs the necessary modules in order to update the version, if applicable. Also, the application will check the availability of new system components (fonts, patterns, special effects, etc), whether standard or optional. Furthermore, you will be able to acquire additional components (such as fill patterns, programmable stitches, typographies, etc).*

---

It is recommended to have an Internet connection in the computer where the application is running. If this is not possible, you will need access to Internet (from any other computer) to get the installation password and to perform the License Activation process. Whichever the case, it is necessary that you have an e-mail account.

## Screen resolution

We recommend you set your screen resolution to at least 1024 x 768 pixels in true color mode (32 bits). If you are planning to use a higher resolution or a wide screen format (16:9), please check that the video card installed in your system fully support it, specially about the OpenGL acceleration features.

## Optionals Devices

Scanner, printer, etc.

---

*- With most of the scanner type devices, manufacturers provide TWAIN drivers, which must be installed in order to allow Design ERA to use the device.*

*- Design ERA connects to the printer using the Windows standard interface. You must previously install the drivers provided by the manufacturer (or included with the operating system) for the printer to operate properly.*

---

### **Connecting to embroidery machines**

Stitch ERA may be connected to embroidery machines to send designs direct to them using an optional feature called Direct Connection. Certain connections (depending on the embroidery machine model) require a serial port and a cable, whereas other connections require an additional hardware.

Although Direct Connection is an optional feature, you may setup up Stitch ERA to use one Direct Connection in Evaluation Mode (limited to 1000 stitches) just to check if your embroidery machine accept the connection properly.

---

**Note:** *Direct Connections is an optional feature and is not included with the product. For further information about brands, models supported and required cables and/or hardware, please contact your distributor.*

---

# Design ERA in the Dongle Mode version

## Installing

To install Design ERA you will need:

- Installation DVD
- Protection device or dongle
- Installation password-file (a file ended with .spp)

Follow the steps hereunder:

### 1 - Getting your installation password-file

Your installation password-file is available for download from Internet. You will need to point your internet browser to <http://www.sierra-software.com/users> and click on the link Download the password to install your product, located at the center of the page. You will find a form with three fields: key Serial Number, key B-Code and License W-Code.

- If you purchase the product from an Authorized Dealer: You can find the Key Serial Number, B-Code and W-Code in the Product Card attached outside the product box, or supplied by your Dealer.
- If you purchase the product direct from Sierra: The Key Serial Number and B-Code is printed on a label attached to the protection device and outside the product box, while the W-Code is located in the PDF document attached to the Shipping Notification e-mail message.

If you did not receive the W-Code, please contact your agent and request it.

Once you complete the required information and get into the site, just click on the link "Download Password". A File Download box will come up. Press the Save button and select the location, within your computer, to store the password-file. The download will take just a few seconds.

## 2 - Prepare your computer to install Design Era

**Important:** Some antivirus, anti-spyware, registry-tracker or similar software may interfere with the installation process. It is highly recommended to temporarily disable them before installing Design Era. Once the product is installed, you can enable them again. Also, depending upon configuration, Windows firewall may block the On-line Activation Wizard and Live Update agent. It is recommended to check the firewall configuration and allow Design Era to access the internet.

**Stitch Era Universal Users:** It is highly recommended to NOT uninstall Stitch Era Universal. Both versions, Universal and commercial are fully compatible. Stitch Era Universal will run automatically each time you start Stitch Era with the protection device not plugged in.

**Stitch Era older versions Users:** Please uninstall the older versions before installing the new version. Remember to back up all the components (fonts, programmable stitches, patterns, etc.) that you may create; once the new version has been installed, you will be able to work with them again. In order to uninstall the former version of Stitch ERA select Start > Configuration > Control panel, and run the item Add or remove programs. From the programs list select Stitch ERA, and press the Add or remove... button. During the uninstallation process, it is likely that you have to restart the computer at least once.

## 3 - Insert the protection device

This is an USB-type device. Insert it in any free USB port. It is not necessary to turn off the computer to do so. The operating system will automatically recognize the device, since it has the necessary controllers, which come as a standard. Once the dongle is recognized, you will be able to start the software installation process.



## 4 - Insert the DVD

### Stitch Era older version Users and New Users of Stitch Era or Hotfix Era:

Close any program you are running. Then, insert the Design ERA installation DVD in the DVD-Rom drive. The installation program will be automatically executed.

---

**Note:** If your computer does not have the auto-run feature activated, the installation program must be manually executed. Click on the start button, select Run and type: "X: \autorun.exe" where "X" is the letter that corresponds to the DVD-ROM unit of the computer, normally D. Then, press Enter or the Ok button.

---

The figure at the right shows an image of the installation screen.

To change the language (English and Spanish), press the corresponding button on the upper right area of the screen.

The Legal Notes section contains an electronic copy of the License Agreement (similar to the one included in this guide). Please, read it before continuing.

Select which program you want to install, Stitch Era or Hotfix Era, and click on the button.





The figure at the right shows an image of the mode selection screen.

You have to select the installation mode, in this case the **Dongle Mode** installation

Press the button and wait for the installation wizard to start

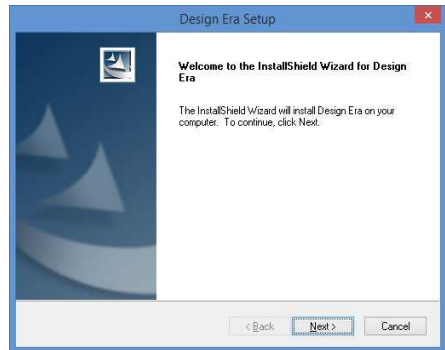


Click on Next> to continue with the process.

Use <Back if you need to return to a previous step in order to modify any of the selections that you must perform during the installation.

The Cancel button allows you to cancel the installation.

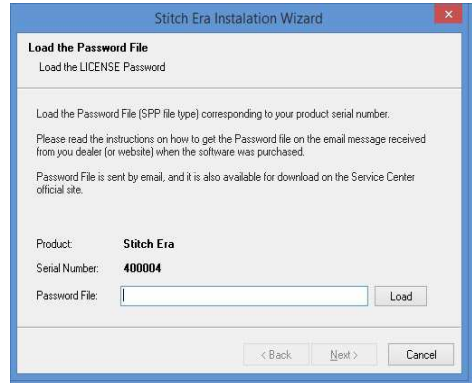
The next step consists of entering the installation password-file you downloaded at the step 1 (Getting your installation password-file)



Press the button at the right of the Password File field to open a box that allow you to browse through the disk units and folders until reaching the file with the installation password.

The name of the file that holds the installation password starts with your licence serial number (which is marked in the dongle and shown as a Serial Number in the wizard) and its extension is '.spp'.

Once the file has been found and selected, click on Open (the box will be closed and will return to the installation wizard). Then, click on the Next button to continue with the next step.



In the next steps, you may select where to install the product and how to configure your shortcuts in the Start menu. We recommend you to accept the default options (just click on the Next > button) since these will normally work properly in almost all of the cases.

Finally, the wizard will start copying the files, displaying a window that contains a bar that shows the progress of the operation. Once the copying process is finished, all necessary adjustments will be carried out in the system registry and a final window will appear showing the Finish button. If necessary, the installation wizard will require a computer restart. The installation of Design ERA will then be finished.

# Activating the License

Design ERA requires that you register and activate your license. Following a simple process, known as License Activation, you validate the authenticity of your installation and make the limited guarantee effective. Only those installations which licenses have been activated get access to support and updates that Sierra may publish.

## When should you activate Design ERA?

From the installation moment, you have a limited time to complete the License Activation, which is constantly displayed in the ribbon of product Start Page. This period of time is granted for your convenience, and during it, you will be able to use the product normally. Nevertheless, once the limit time has expired, you have to activate you license to continue using the product.



The process of License Activation is carried out through Internet, and you will need an Internet connection in the computer where Design ERA is installed or, have an e-mail address and Internet access from any other computer. Although we have taken the necessary precaution for the License Activation Service to be available at all times, temporary Internet connectivity problems, out of our control, may affect the availability of this service. Due this, we highly recommend you to go through the License Activation process as soon as possible.

## Design ERA Activation Wizard

At all times, you can execute the License Activation Wizard by clicking on the icon with a small key, located at the Account Page. If the limit time to complete the activation is expired, the Activation Wizard will automatically appear when you attempt to execute the product.

## Online Activation

If the computer where Design ERA is installed has an Internet connection, you can perform the activation on-line.

**Step 1:** Execute the Activation Wizard, select the Send a License Activation option and click on Next.

Design Era License Activation Wizard

License Activation

Send a License Activation Request  
Use this option to create a License Activation Request and send it on line or through Design Era website.

Load a License Activation Code  
Use this option to enter a License Activation Code (.arcv file) received by e-mail.

Click Next to continue.

Back Next Cancel

**Step 2:** Complete your Registration information. Your e-mail address is very important for the activation process. Please, make sure you have access to it and keep it updated.

Design Era License Activation Wizard

License Activation

Creating a License Activation Request. Please, enter a name to identify this computer.

User:

Company:

Address:

City:

State:  Zip Code:

Country:  Telephone:

e-mail:

Re-type e-mail:

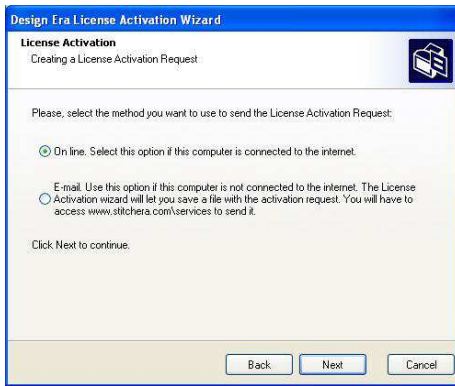
Computer:  [Help and Privacy Policies.](#)

If the License Activation Agent eventually needs to make a reference to this computer, it will display the name you select in this step.

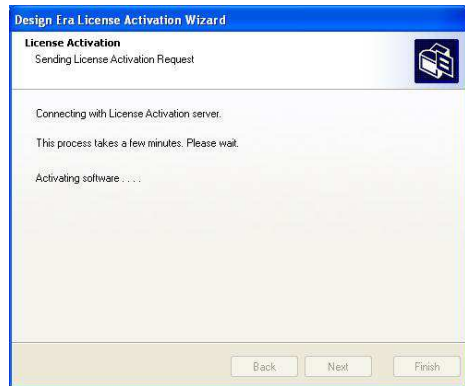
Back Next Cancel

Note: The wizard automatically fills the field "Computer" with the machine name assigned by the operating system. You can change it freely. This name will be used just for reference, to help you identify the machine(s) where you have activated the product.

**Step 3:** Select the On line option and click on Next



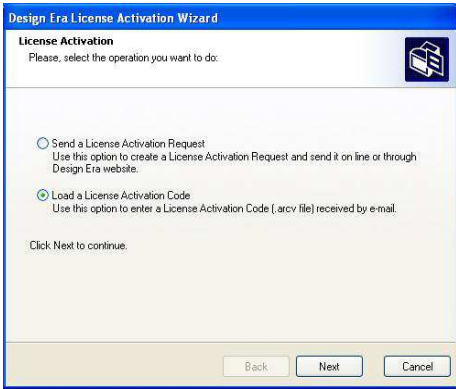
**Step 4:** During this step, the application will try to connect with the Activation Service to transfer your request.



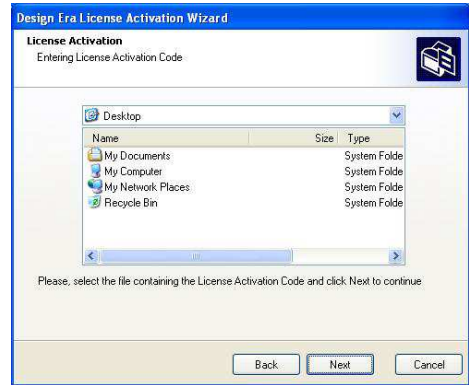
If your request can be processed automatically, the wizard will report that your license has been activated. You will receive an e-mail at the address you have registered, confirming the activation and notifying your username and password to enter Design ERA Service Center (<http://www.sierra-software.com/users>)

In some cases, the activation request cannot be processed automatically. The activation wizard will inform you about this situation and you will receive an e-mail confirming the reception of the request. When your request is processed, you will receive an e-mail with the Activation Code for your license. Save the file attached to the e-mail message in your hard drive and follow this procedure:

**Step 5:** Execute the Activation Wizard, select the Load a License Activation Code option and click on Next



**Step 6:** Use the list of Units and the list of Folders to point the wizard to the location where you saved the received file. Then click on Next

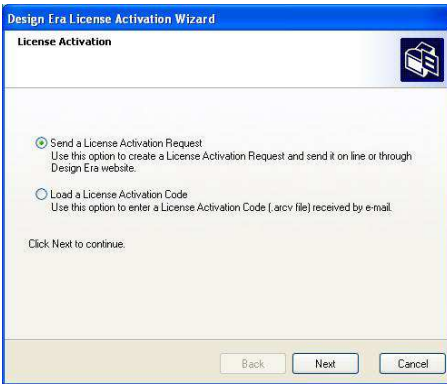


If the procedure were successful, the wizard will confirm that your license is activated. In the e-mail you have received the Activation Code you will find your username and password to enter Design ERA Service Center (<http://www.sierra-software.com/users>)

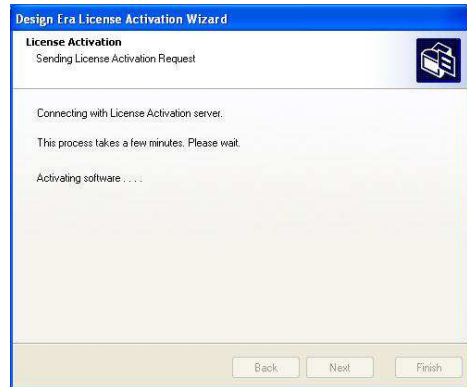
## E-mail Activation

If the computer where Design ERA is installed has no Internet access, you will need to perform the activation through e-mail. To do this, you will also need to access Design ERA Service Center at <http://www.sierra-software.com/users>

**Step 1:** Execute the Activation Wizard, select the Send a License Activation option and click on Next.

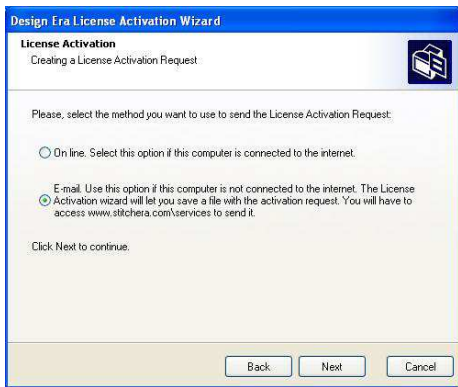


**Step 2:** During this step, the application will try to connect with the Activation Service to transfer your request.

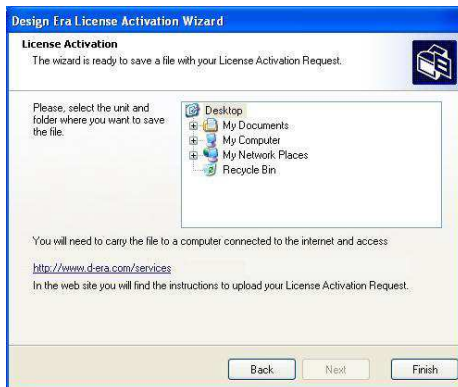


Note: The field "Computer" is filled by the wizard with the name defined by Windows. You can change it freely. The same name is used for reference of the computer if necessary.

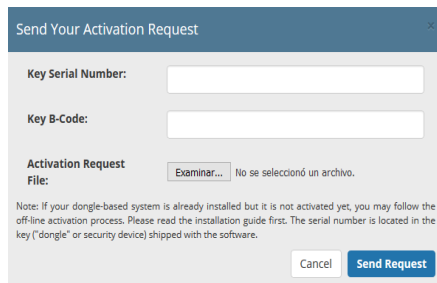
**Step 3:** Select the E-mail option and click on Next



**Step 4:** Use the list of folders and units and indicate where you wish to save the activation request. Click on Finish.



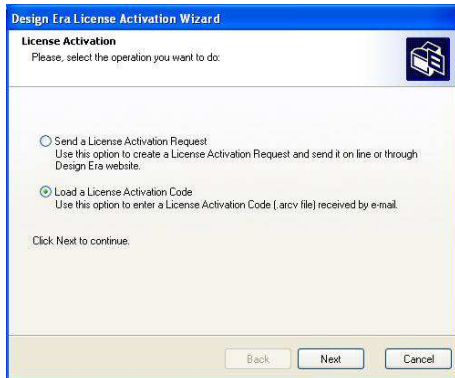
Once you have saved in your hard drive the file that contains the Activation Request, copy it to a computer with Internet access. You will also need the Key Serial Number and Key B-Code of your license (printed in the label of the protection device). Access <http://www.sierra-software.com/users> and fill the form entitled "Send Your Activation Request". Once you get access to the site, please follow the instructions to send your activation request.



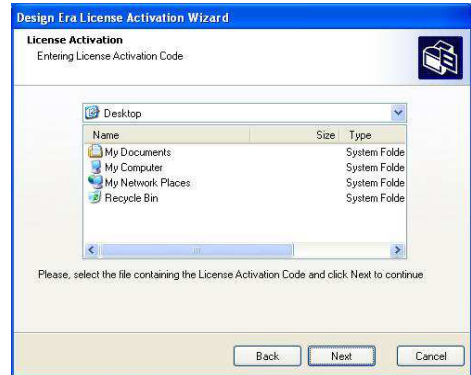


When your request is processed, you will receive in the e-mail address you registered, the Activation Code of your license. Save the file attached to the e-mail message in your hard drive and follow this procedure:

**Step 5:** Execute the Activation Wizard, select the Enter the License Activation code received by e-mail option and click on Next



**Step 6:** Use the list of Units and the list of Folders to point the wizard to the location where you saved the received file. Then click on Next



If the procedure were successful, the wizard will confirm that your license is activated. In the e-mail you received the Activation Code you will find your username and password to enter the Design ERA Service Center (<http://www.sierra-software.com/users>)

# Design Era in the Live Mode version

## Installing

To install Design Era you will need:

- Installation DVD or downloaded package
- Installation password-file (a file ended with .sus)

Follow the steps hereunder:

### 1 – Getting your installation password-file

Your installation password-file has been attached to an email sent to you at the moment of the purchase of Design Era in Live Mode. Save the file to your computer and keep it backed up properly. The installer will ask for this password-file and you will have to search for it in your computer drives to validate the installation.

### 2- Prepare your computer to install Design Era

**Important:** Some anti-virus, anti-spyware, registry-tracker or similar software may interfere with the installation process. It is highly recommended to temporary disable them before installing Design Era. Once the product is installed, you can enable them again. Also, depending upon configuration, Windows firewall may block the On-line Activation Wizard and Live Update agent. It is recommended to check the firewall configuration and allow Design Era to access the internet.

### 3- Insert the DVD

Close any program you are running. Then, insert the Design Era installation DVD in the DVD-Rom drive. The installation program will be automatically executed.

---

**Note:** *If your computer does not have the auto-run feature activated, the installation program must be manually executed. Click on the start button, select Run and type: "X: \autorun.exe" where "X" is the letter that corresponds to the DVD-ROM unit of the computer, normally D. Then, press Enter or the Ok button.*

---

The figure at the right shows an image of the installation screen.

To change the language, press the corresponding button on the upper right area of the screen.

The Legal Notes section contains an electronic copy of the License Agreement (similar to the one included in this guide). Please, read it before continuing.

Select witch program you want to install, Stitch Era or Hotfix Era, and click on the button.



The figure at the right shows an image of the mode selection screen.

You have to select the installation mode, in this case the **Live Mode** installation

Press the button and wait for the installation wizard to start

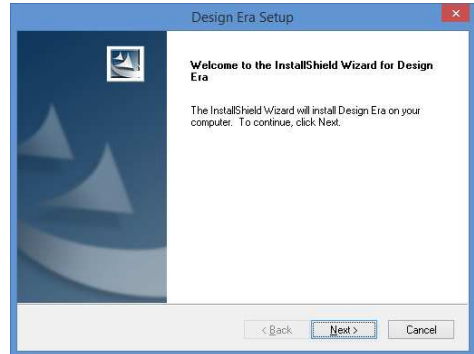


Click on Next> to continue with the process.

Use <Back if you need to return to a previous step in order to modify any of the selections that you must perform during the installation.

The Cancel button allows you to cancel the installation.

The next step consists of entering the installation password-file you have received by email at the step 1 (Getting your installation password-file)



Press the button at the right of the Password File field to open a box that allow you to browse through the disk units and folders until reaching the file with the installation password.

The name of the file that holds the installation password starts with your licence number and its extension is '.sus'.

Once the file has been found and selected, click on Open (the box will be closed and will return to the installation wizard). Then, click on the Next button to continue with the next step.



In the next steps, you may select where to install the product and how to configure your short-cuts in the Start menu. We recommend you to accept the default options (just click on the Next > button) since these will normally work properly in almost all of the cases.

Finally, the wizard will start copying the files, displaying a window that contains a bar that shows the progress of the operation. Once the copying process is finished, all necessary adjustments will be carried out in the system registry and a final window will appear showing the Finish button. If necessary, the installation wizard will require a computer restart. The installation of Design Era will then be finished.

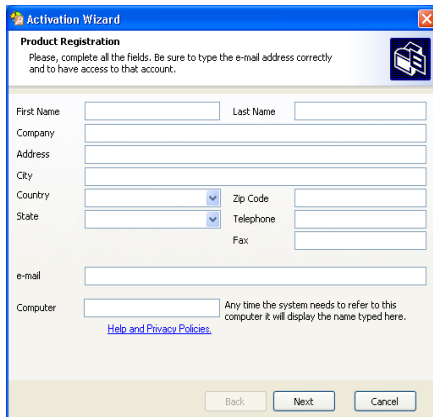
## Activating the License

Design Era requires that you register and activate your license. Following a simple process, known as License Activation, you validate the authenticity of your installation and make the limited guarantee effective. Only those installations which licenses have been activated get access to support and updates that Sierra may publish.

### Design Era Activation Wizard

After the installation moment, you have to complete the License Activation in order to begun using the software. The process of License Activation is carried out through Internet, and you will need an Internet connection in the computer where Design Era is installed.

The Activation Wizard will automatically appear when you attempt to execute the product.

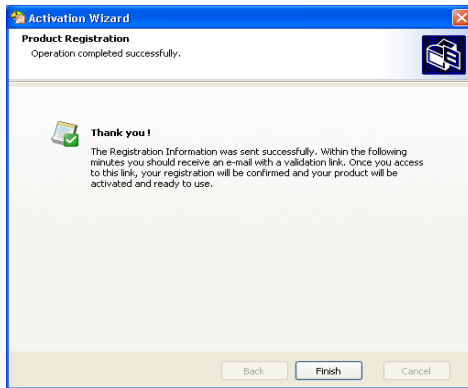


The screenshot shows the 'Activation Wizard' window with a 'Product Registration' section. The window title is 'Activation Wizard' and it contains a close button. Below the title bar, there is a sub-header 'Product Registration' and a note: 'Please, complete all the fields. Be sure to type the e-mail address correctly and to have access to that account.' To the right of this note is a printer icon. The form fields are: First Name, Last Name, Company, Address, City, Country (dropdown), Zip Code, State (dropdown), Telephone, Fax, e-mail, and Computer. A note next to the Computer field says: 'Any time the system needs to refer to this computer it will display the name typed here.' Below this note is a link for 'Help and Privacy Policies'. At the bottom of the window are three buttons: 'Back', 'Next', and 'Cancel'.

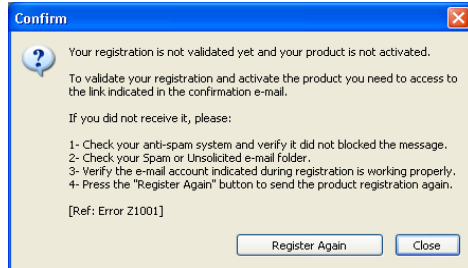
**Step 1:** Complete your Registration information. Your e-mail address is very important for the activation process and you can not change it at activation time. This email address is the one that you have chosen when you bought the product.

Note: The wizard automatically fills the field "Computer" with the machine name assigned by the operating system. You can change it freely. This name will be used just for reference, to help you identify the machine(s) where you have activated the product.

**Step 2:** During this step, the application will try to connect with the Activation Service to transfer your request. Your request will be processed automatically, the wizard will report that your registration information was sent successfully and that you will receive an e-mail at the address you have registered with a link that you must click in order to confirm the activation and to finish with the activation process.



If you try to run Design Era without confirming the activation in the email link you will be prompted to register again, as shown in the image at the right, until you confirm the activation. If you want you can register again, and you will receive the activation email again, but you must activate the software in order to use it.



## Using Design ERA in several computers

With the Dongle Mode version of the software you can install and activate Design Era in several computers. However, you can not use it in more than one computer at a time. The product will only run in the computer where the protection device is plugged in. To legally install the product in several computers, you will need to complete the License Activation process for each of them. **Please note that you can activate your license in no more than three (3) different computers for the dongle mode version.** In case you have installed and activated Design Era in three different computers and need to install it in a fourth one (ie. due to a computer failure), the installation wizard will prompt you to select one of your previous installations to be marked as disabled and the product will become inoperative in that computer.

**Installation and activation in multiple computers will be a smooth and trouble-less process if you complete the License Activation in the first computer before starting the installation in a second one.**

In the live mode version you can install and activate the software in as many computers as you want but you can only use the software in only one (1) of them. The last computer where the software is been activated is the active computer where you can use the software. if you activate another computer later you make this new computer the active one and the first one will not work.

The ribbon bar available when Design Era software start page is visible, shows the status of your activations, displaying the computer names where the activation were completed. In the Live Mode version of the software you can see the time remaining for the subscription to expire.

### Activation and changes in computer hardware

License Activation links your computer with your license. If you replace important parts of your computer hardware such as the main board, the hard disk, etc. you will need to activate the license again. Upon a hardware change, the product Activation Agent will be triggered and will prompt you to complete a new activation within a period, usually shorter than the period for the the very first time.



## **Important Notes for the dongle mode version**

### **About the protection device**

For the Software to run properly, it requires a protection device connected to a USB port of the computer in which it runs. Such device is provided with the Software physical media, within the sealed envelope, and must be installed by the user following the printed instructions in the software documentation. The limited warranty stated in the License Agreement warrants the user for manufacturing defects that may affect the protection device.

During the warranty term, Sierra shall replace a defective protection device by a flawless one, with no charge, provided that a) the original defective protection device is returned to Sierra for its inspection, and b) the outcome of such inspection shows that the defect is due to manufacturing problems.

Shipping, insurance, taxes and other charges arising from the returning of the original protection device and its replacement shall be afforded by the user. In case the warranty term has expired, or the protection device, at Sierra's technical experts sole judgment, is affected by damages not covered by the warranty, the defective protection device may be replaced, at the applicable charges, which shall be afforded by the user.

Warranty does not cover damages or malfunctions arising from, a) problems with the USB port; electrical supply breakdown, atmospheric phenomenon; external or internal damages or breakdowns for any cause not related to manufacturing errors.

**If the protection device is stolen or lost, Sierra shall not replace it, and the user shall need to acquire a new license at the then current prices**, except that the user may have hired directly to Sierra the Replacement Insurance, in which case, its terms and conditions shall apply. You may inquire further information about this service sending your query through a form available at <http://www.sierra-software.com>. This service may not be available in all countries.

## **About the License Activation**

The Software included in this package is subject to an authentication and registration procedure, called License Activation. Once the Software is installed, User has a limited time to complete the License Activation process, during which the Software shall be completely operative. After such term, the Software shall become non-operative until the License Activation process is completed.

**In order to perform the License Activation process, an Internet access is required on the computer where the Software is installed, or else, the user must have access to internet and an e-mail account to receive the Activation Code.**

In the License Activation process, the user must provide basic information for the Product Registration. Upon completion, the Software shall be registered and the license activated.

The Software can be activated in up to three computers. The activation process gets a digital signature depending of the computer's hardware and software, and both the Activations Request and the Activation Code depends on this digital signature.

In case critical parts of the computer's hardware or operative system need to be replaced or reinstalled, the Software may required another license activation. You shall need to Activate the license again, and the previous activation shall be annulled.

## **Training and Technical Support**

Users shall contact their distributors in order to get technical support. Sierra's distributors network is ready to provide technical support and professional training regarding the Software use. Training services as well as the different levels of technical support may or may not be included in the license fee, depending on each distributor's policies. It is a User responsibility to get this information.

Sierra provides a free Basic Support Service, through e-mail, to Users having activated licenses. You may contact support through the form available at <http://www.sierra-software.com/users>

## About the Components

The components (patterns, fonts, programmable stitches, monogram styles, stitch styles, motifs, etc.) included in the Software, downloaded from the Update Service, acquired separately or created by User, contain Sierra's proprietary information, protected by intellectual property rights. **For this reason, any attempt to use the components contained in a Software installation, in another Software installation (having a different serial number), even if it is the same or similar software, of the same or different User, under any title (interchange, assignment, transference, sale, lease, knowledge schemes, resources sharing, etc.) is expressly prohibited and shall constitute a violation of Sierra's rights.**

## About the Installation Password-File

In order to complete the installation process in the User computer, the Installation Wizard shall ask for a password-file. This password-file shall be obtained by the User using the electronic service available at <http://www.sierra-software.com/users>. The information required to access this service is located in the product package (serial number and B-Code) and in a document supplied by the agent who sold the software to the user (W-Code). This document may be delivered to the user in electronic (e-mail or file in a computer media) or printed version.

## Demo available

Design ERA agents are able to demonstrate the product upon request to allow prospective users to carefully evaluate the Software to determine if it fits for their purposes, before acquiring its license. You can also send a request to get a trial version at <http://www.sierra-software.com>

Once purchased, by opening the sealed envelope containing the Software physical media and protection device, you accept the conditions of the License Agreement. If you are not in agreement with this terms and conditions, you must return the envelope, unopened, and all the attached documentation to the store where you acquired it, and the price you paid shall be returned to you. If more than 7 days have passed since the acquisition of this software package, the terms and conditions of this agreement shall be accepted by you and you shall have no right to any reimbursement.

# License Agreement

## **AGREEMENT BETWEEN SIERRA TECHNOLOGY GROUP S.A. AND THE END USER, BY WHICH IT IS LICENSED THE USE OF THE SOFTWARE "DESIGN ERA"**

SIERRA TECHNOLOGY GROUP S.A. (hereinafter "Sierra") hereby grants to the buyer of this copy (hereinafter "User") a non transferable, perpetual and non exclusive license to use the software contained in this copy (hereinafter the "Software"), according to the following terms and conditions:

**1. License granted.** By this agreement, Sierra grants the User license to perform, perpetually, the following acts:

- 1.1. To install, load, and use the Software in one computer (at a time).
- 1.2. To make one (1) backup copy of each of the physical media, only to replace the original media in case they become useless, as well as the installation made with such original media.
- 1.3. Software Activation: User must activate the Software within a limit period from its installation; otherwise, the Software shall cease working until its activation. Activation is performed at Design ERA site <http://www.sierra-software.com/users>. Activation requires Internet access and an e-mail address.

**2. Restrictions to the license.** Sierra keeps every author right and faculty not expressly granted to the User. Only to clarify and give an example of the acts that are forbidden to the User, it is mentioned that:

- 2.1. No copies of the Software can be made, other than the only one authorized backup copy.
- 2.2. The Software can not be used in more than one computer at the same time, nor it can be made accessible to other computers or more than one user through a network.
- 2.3. The Software can not be leased, or its use allowed to third parties through a time sharing service, or "users' clubs".
- 2.4. The Software can not be modified or translated;
- 2.5 The license can not be assigned nor transferred to any third party, by any manner whatsoever, for no purpose at all, without the express and written authorization from Sierra, and payment of the applicable charges.
- 2.6. The Software can not be subject to any reverse engineering or similar process, as well as to any other process to avoid or supersede its protection and security devices or mechanisms.

**3. Term.** This license shall be effective until its termination caused by: a) Termination by User; or b) Breach by User to any of the terms and conditions of this Agreement. In both cases, it shall be User's

responsibility to erase the Software installation, as well to destroy all the physical media and the backup copy that he may eventually made.

#### **4. Limited Warranty.**

4.1. SOFTWARE PERFORMANCE: THE ONLY WARRANTY SIERRA MAKES IS THAT THE SOFTWARE WILL FUNCTION AS DESCRIBED IN THE MANUAL INCLUDED IN THIS PACKAGE. SIERRA MAKES NO OTHER WARRANTY, EXPRESS OR IMPLIED, AND IN NO WAY IS RESPONSIBLE FOR THE FITNESS OF THE SOFTWARE FOR A PARTICULAR PURPOSE. SIERRA DOES NOT WARRANT THAT THE SOFTWARE SHALL BE FREE OF ERRORS, NOR THAT ITS USE SHALL BE UNINTERRUPTED. DUE TO THE WIDE RANGE OF COMPUTERS IN WHICH THE SOFTWARE MAY BE USED, USER ASSUMES THE RISK OF THE SOFTWARE RESULTS AND ITS ABILITY TO PERFORM AS DESCRIBED. SIERRA RECOMMENDS USER TO TEST SOFTWARE TO DETERMINE IF IT IS APPROPRIATE FOR ITS INTENDED USE, BEFORE ACQUIRING IT.

4.2. Defective media: For a period of 180 days since the acquisition date, Sierra will replace defective media returned by User for error free media, provided that defective media was affected by manufacturing or recording defects. Sierra shall have no liability or obligation if media was damaged by accident, improper use, or after the aforementioned term.

4.3. WARRANTY CONDITIONS: It shall be condition for the software performance and defective media warranty to be effective, that User have activated the Software, except that the defects in the physical media have prevented User to perform them.

4.4. WARRANTY LIMITATION: SIERRA AND ALL PERSONS INVOLVED IN THE SOFTWARE CREATION, PRODUCTION OR MARKETING, ITS EMPLOYEES OR DISTRIBUTORS SHALL NOT BE LIABLE FOR ANY DAMAGE, DIRECT OR INDIRECT, CONSEQUENTIAL OR INCIDENTAL, DUE TO THE USE OR THE INABILITY TO USE THE SOFTWARE. IN ANY CASE, LIABILITY OF ANY OF THE AFOREMENTIONED SHALL BE LIMITED TO THE AMOUNT PAID AS ROYALTY FEE. IN CASE THAT THIS WARRANTY LIMITATION IS NOT PERMITTED BY THE LAW, IT WILL SURVIVE TO THE EXTENT PERMITTED.

4.5. Security Device: To avoid its illegal use, Software is delivered together with a security device. Software will not work if the security device is not properly installed or missing. Sierra shall not replace the hardware lock if lost or malfunctioning, except for manufacture errors. Please refer to the documentation provided with the Software for further information regarding the Security Device.

**5. Upgrades.** Users that activated the Software shall be eligible to receive the Software upgrades that Sierra may release from time to time, to the applicable fees set forth for such upgrades.

**6. Applicable Law.** This license agreement shall be governed by the laws of Argentine Republic. Every dispute between the parties shall be subject to Civil Ordinary Courts at Buenos Aires City,

Argentine Republic. In case any of the provisions of this Agreement is annulled this will not affect the rest of the Agreement.

**7. ACCEPTANCE OF THE AGREEMENT BY USER.** BY OPENING THE SEALED ENVELOPE ATTACHED TO THIS AGREEMENT, USER CONFIRMS THAT HAS READ AND UNDERSTOOD THE AGREEMENT, AND THAT AGREES TO BE BOUND TO IT. USER AGREES THAT THIS AGREEMENT IS THE ONLY APPLICABLE BETWEEN THE PARTIES, AND THAT IT SUPERSEDES EVERY PREVIOUS REPRESENTATION, WHETHER ORAL OR WRITTEN, RELATED TO THE OBJECT OF THIS AGREEMENT.

# Compatible Hardware

Design ERA has been tested on computer systems with the following motherboards and processors:

Processor	Intel(R) I5 Processor Core(TM) CPU 4430 @ 3GHz
Total Memory	8 GB
Video	NVIDIA GeForce 8500 GS
Adapter RAM	512 MB

Processor	Intel(R) Core(TM)2 Duo CPU E8400 @ 3GHz, 2 Core(s)
Total Memory	4 GB
Video	Ati Radeon HD 3600
Adapter RAM	512 MB

Processor	Intel(R) Core(TM)2 Quad CPU Q8300 @ 2.50GHz
Total Memory	4 GB
Video	NVIDIA GeForce 8400 GS
Adapter RAM	512 MB

Processor	x86 Family 15 Model 3 Stepping 3 GenuineIntel ~2799 Mhz (Pentium 4)
Total Memory	1 GB
Video	NVIDIA GeForce FX 5200
Adapter RAM	128 MB

All mentioned brands and or trademarks belongs to their respective owner companies.

Design ERA Version 17 – © 2016 Sierra Technology Group S.A.  
All rights reserved  
Rev 17.00 – July 2016